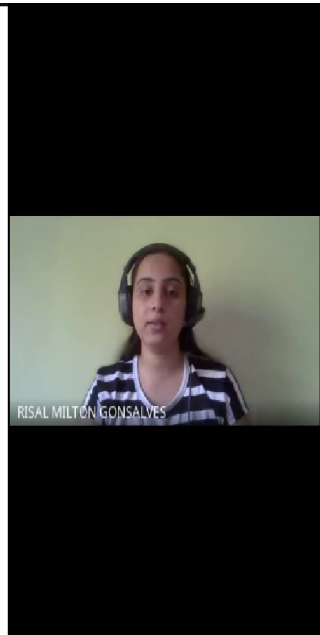


Let's Observe on GeoGebra!

Fraction #1: Go! Fraction #2:

$\frac{1}{2} \times \frac{3}{5} = \frac{3}{10}$

Multiplying Fractions!
By John Ulbright
<https://www.geogebra.org/m/AZnX7deX>



Interactive clock | analog clock | Adding Time Word Problems - N

mathsframe.co.uk/en/resources/resource/118/adding_time_word_problems

Exit Game

Score 0 Time 13 MATHSFRAME COLOUR

It takes an hour to get from Loxley to Stratford by train.
Alessandra begins her journey at the time shown.
When does she arrive?

10:25 10:12 12:25 09:25 11:25

Which color shape has a perimeter of 18 Units?

5 5
5 4 4
5
2 2 2
5 5
5

Let's Play

<https://toytheater.com/perimeter-climber/>

PERIMETER CLIMBER

Here's your Assignment !

Coins 0

Interactive clock | analog clock | x +

visnos.com/demos/clock

Digital Clock, change format by clicking the buttons below

7:41¹⁶ PM

12 24 Off

Real Time

Mode: Time

hours: 23

minutes: 13

Reset

Here's your Assignment...

<https://jamboard.google.com/d/1YaCjyXUYwBTfwz-xIFHNbRd31LTE52KIL9SFwv-dlk/viewer?f=1&pli=1>

Measure angles from your surrounding with help of protractor and upload its image. Write its measure in degree and type of angle using a sticky note.



Measure: 80 degree
Type: Acute Angle



Measure: 47 degree
Type: Acute angle

Measure angles from your surrounding with the help of a protractor.

Example: corner of a table, book, book shelf, etc.

Add picture of it on jam board slide mentioning its measure and the type of angle.

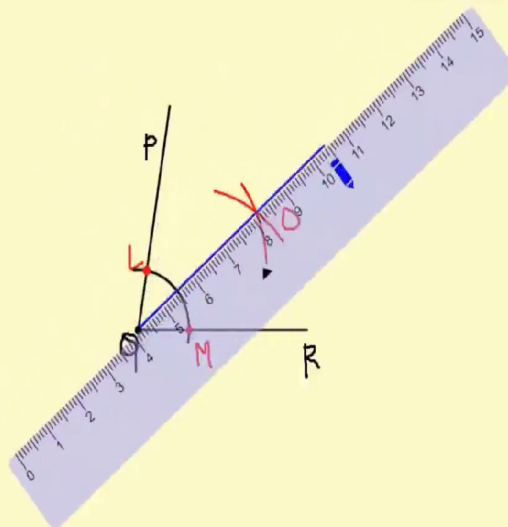


Construct an angle PQR of 80° . Use the compass and the ruler to bisect it.



Login

Lessons



Maths Pad for Construction

GeoGebra

<https://www.geogebra.org/m/jFFERBdd#material/ZFTGX57r>

Proof Without Words
• Author: **Steve Phelps**

Navigation icons: Home, Back, Forward, Search, Help, Refresh

Video feed: 1 active participant, 2 placeholder icons